



IL NODO  
GROUP

Impresa Sociale

Casa Raggio di sole  
Pasturo (LC) – Italy

30 May – 1 June 2025

Early bird discount until 1 April 2024

Including a DIG  
Deepening Integration Group

Info & Registration

[www.tiny.cc/ECW25](http://www.tiny.cc/ECW25)

**Group Relations Conference**

Energy, Creative Collaboration and  
Wellbeing in Organizations (ECW)

**16th Edition**

## In collaboration with



Supported by the A.K. Rice Institute as an Incubator Initiative in the development, exploration, or application of Group Relations.



INTERSTICIA

ISPSO



THE OF HUMAN TAVISTOCK RELATIONS INSTITUTE

# The ECW Conference

## Pioneering Holistic Learning



For 16 years, the “**Energy, Creative Collaboration and Wellbeing Conference (ECW)**” has been at the forefront of reimagining group relations work. In a world where virtual work, artificial intelligence, and our changing relationship with the environment create increasingly complex demands, many people report feeling depleted and disconnected. ECW has developed a unique approach that can inform our response to these challenges. Whilst honouring the classic foundations of Group Relations, the conference has evolved to embrace a more complete understanding of human experience and organisational life.

ECW’s primary task is to **explore how resource awareness, energy and creative collaboration can expand well-being in life and work**. We do this by weaving together three vital elements:

- **Classic Group Relations methodology:** examining task, authority, leadership and followership, and organisational dynamics through both conscious and unconscious processes
- **Somatic awareness and movement:** understanding group life through physical presence, voice and creative expression
- **Ecological approach:** exploring our relationship with nature and the interconnected systems we inhabit

Through this integrated approach, we create a temporary learning organisation where participants explore group dynamics through:

- **Traditional events:** plenaries, social dreaming matrix, institutional event, review and application groups
- **Creative sessions:** movement work, artistic expression, voice and sounds
- **Integration work:** connecting individual and group experiences, as well as body and mind with the environment

*Detailed programme available on request*

**In today's rapidly changing landscape – where virtual work, artificial intelligence, and global challenges are reshaping our reality – this integration has never been more relevant. ECW creates a space where participants can rediscover their physical presence, deepen their connection to nature, and explore the intricate web of relationships that shape our organisational lives.**

## **Who benefits?**

ECW welcomes curious minds from all professional backgrounds, cultures and countries. This conference is particularly valuable for:

- Leaders and professionals seeking deeper insights into group dynamics and organisational behaviour
- Change-makers interested in sustainable approaches to organisational challenges
- Practitioners wanting to understand the unconscious forces that shape group behaviour
- Those looking to bring innovation and wellbeing into their professional environments and personal life

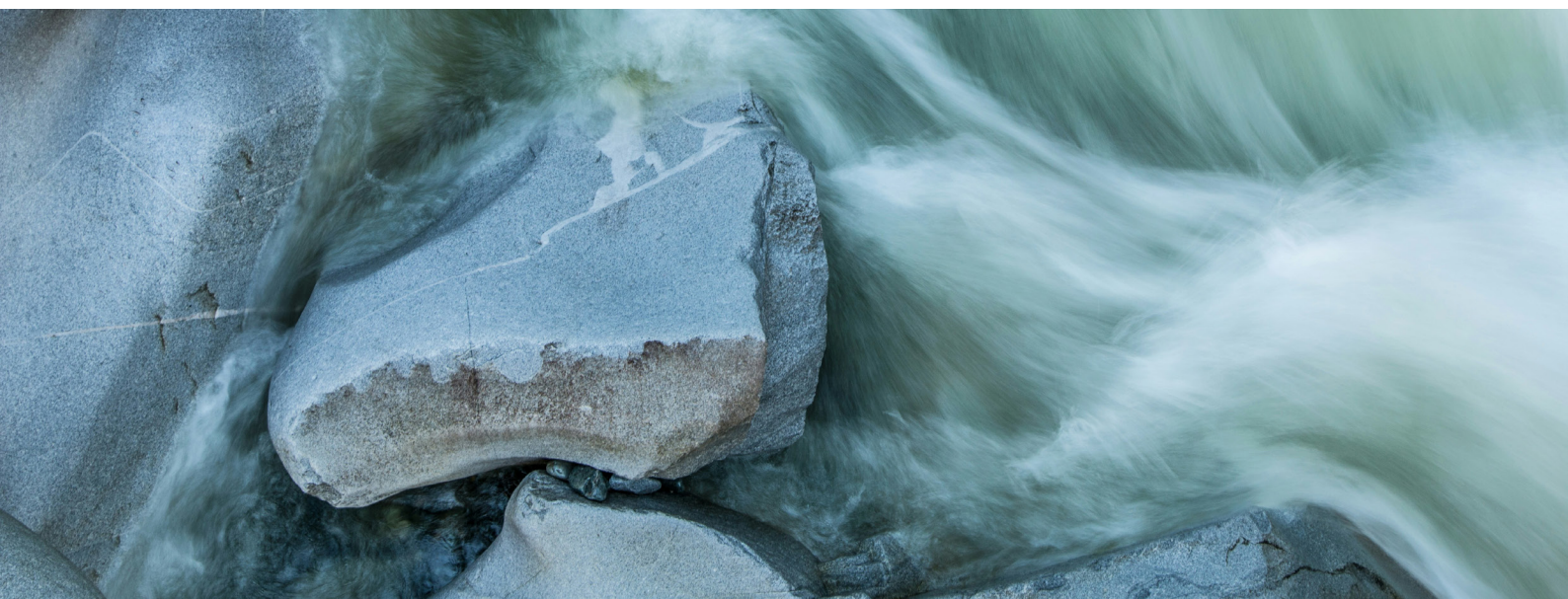
Whether you are new to Group Relations or a returning participant, ECW offers hands-on experiences and reflective practices, with practical insights that translate directly to your professional and personal life.

Our approach to learning is dynamic and evolving – we see each conference as an opportunity to build on collective discovery. For returning participants, each experience offers new layers of understanding and fresh approaches to applying these insights in their work and lives.

## **Deepening Integration Group (DIG)**

The DIG is an exclusive opportunity for a restricted number of experienced participants to explore group dynamics at a deeper level. The DIG offers advanced perspectives on conscious and unconscious group processes, enhancing your ability to recognise and work with these dynamics in both personal and professional contexts. Open to those with previous experience in GRCs, applications are subject to review.

The DIG runs alongside the main conference, creating a unique meta-learning space where participants can develop deeper insights into body-mind connections and organisational dynamics, as they unfold.



# Voices from ECW

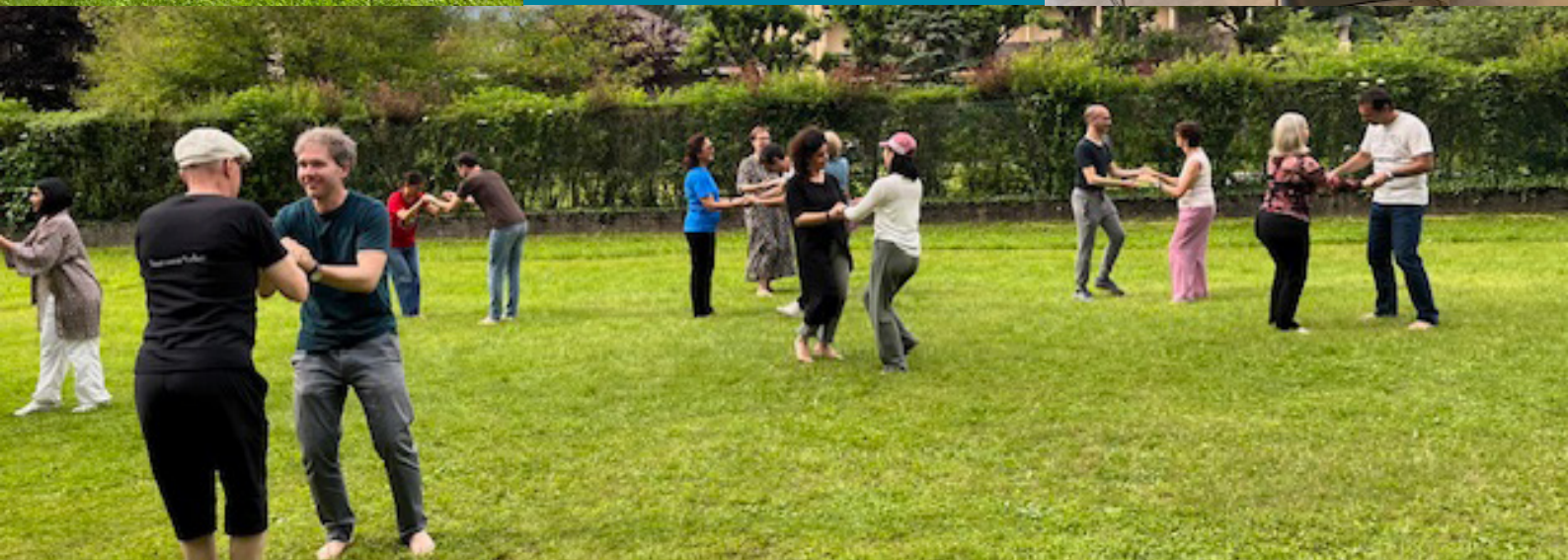


“An experience that has changed me, left me with some food for thought for my working and personal life. I have met fantastic people, the conference format is magical.”

“The role of the body is vastly underutilized in conferences here in the U.S. and I was so happy to be able to bring all parts of me to the conference...”



“It is one of the most formative and comprehensive experiences I have had. For months afterwards, stimuli and reflections remain in the mind that help in private life and work.”



# Meet Our Directorate

[tiny.cc/ECW-DirectorateInterview](https://tiny.cc/ECW-DirectorateInterview)

Scan or use the link to watch an interview with our directorate team and discover their vision for ECW 2025. Learn about this year's conference and what makes the ECW experience unique.



## Staff Directorate



### **Marco Valerio, Co-Director**

Scientific researcher on the body-mind connection, university lecturer and organizational consultant. Marco administered and consulted in previous online and in-person editions of ECW and has been involved in group relations conferences in Europe, Asia, and Australia. He is passionate about the relationship between embodiment and the unconscious.



### **Rachel Kelly, Co-Director**

Group Relations and Organisational Development Consultant at the Tavistock Institute of Human Relations, London, with extensive experience of staffing Leicester conferences and international Group Relations Conferences. Teacher of the Alexander Technique and Yoga. She is interested in exploring relatedness by studying the unconscious and conscious awareness through journeys into embodiment, sensation, perception, the imagination, mind/body/spirit and oneness.



### **Elisa Mingarelli, Administrator**

People and project manager of Foundation Rosa dei Venti, she studied psychology and she is interested in the area of the Social Dreaming as a facilitator and a researcher from 20 years. She works as a consultant with nature in connection with primary elements, creativity, body and mind.



### **Luca Mingarelli, Associate Director and DIG Director**

Chairman Foundation Rosa dei Venti. Social entrepreneur, Psychotherapist (ECP, WCP). Director of Therapeutic Community for adolescents, Organizations consultant. Faculty of Psychosomatics. Past president of Il NODO Group. OPUS member. Creator and co-director of innovative GR events such as "ECW" and "Learning From Action." Director of the ECW Method.

## Consultants



### **Jack Lampl, Consultant**

Organizational Consultant, Visual artist and videographer, Credentialed Mediator National Conflict Resolution Center, San Diego, Certified Group Relations Consultant, AK Rice Institute, Past President Threshold Foundation, Past President and Fellow AK Rice Institute, Member of AKRI and Grex, AKRI West Coast Affiliate, External Board Member San Diego Psychoanalytic Center



### **Hanna Fisher, Consultant**

Hanna was born in Italy to a mixed heritage family. She specialised in clinical psychology with a thesis on the body- connection and in psychoanalytic psychotherapy at the Tavistock Centre, London. She currently works as a child-adult psychotherapist and supervisor for children and adults. She is co-founder of Wild Thoughts, an innovative organisational consultancy practice focusing on wellbeing and sustainability in organisations and social change.

# Fees



The Directorate always keeps this conference as accessible as possible. The fee contributes to the possibility of awarding reductions to those who are interested in participating in ECW and have fewer financial resources. The fee, including VAT at 22%, includes accommodation and full board from Friday – Sunday, 30 May – 1 June 2025.

	Early Bird Before 1 April	Regular After 1 April
Fee	€ 560 + VAT = € 683,20	€ 660 + VAT = € 805,20
Deepening Integration Group	€ 630 + VAT = € 768,60	€ 730 + VAT = € 890,60

*Reduced Fee: – for members from a conference sponsoring organisation  
– for groups of 2+ people registering together*

## Additional Individual Benefits

Fees can be further reduced in specific situations of need. Applications must be received by Tuesday 1 April 2025 at [ecw@ilnodogroup.it](mailto:ecw@ilnodogroup.it).

The booking fee is non-refundable unless there are international travel restrictions (minus administrative and handling costs).

*The conference is a temporary learning organisation and does not have a therapeutic purpose*



## Duration

### **Working Conference**

Begins: 12.30 on Friday 30 May

Ends: 14.00 on Sunday 1 June

Registration: from 10.15 – 12.00

### **Dig – Deepening Integration Group**

Begins: 17.00 on Thursday 29 May

Ends: 14.00 on Sunday 1 June

Registration: from 16.30 – 17.00

Participants are invited to contribute to a light lunch before the conference on Friday 30 May, by bringing food typical of origin.



# Practical information

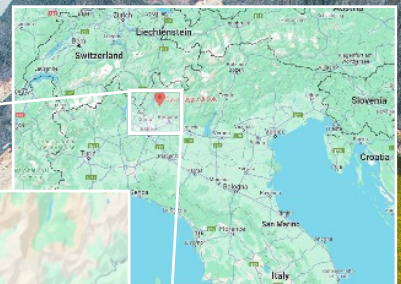
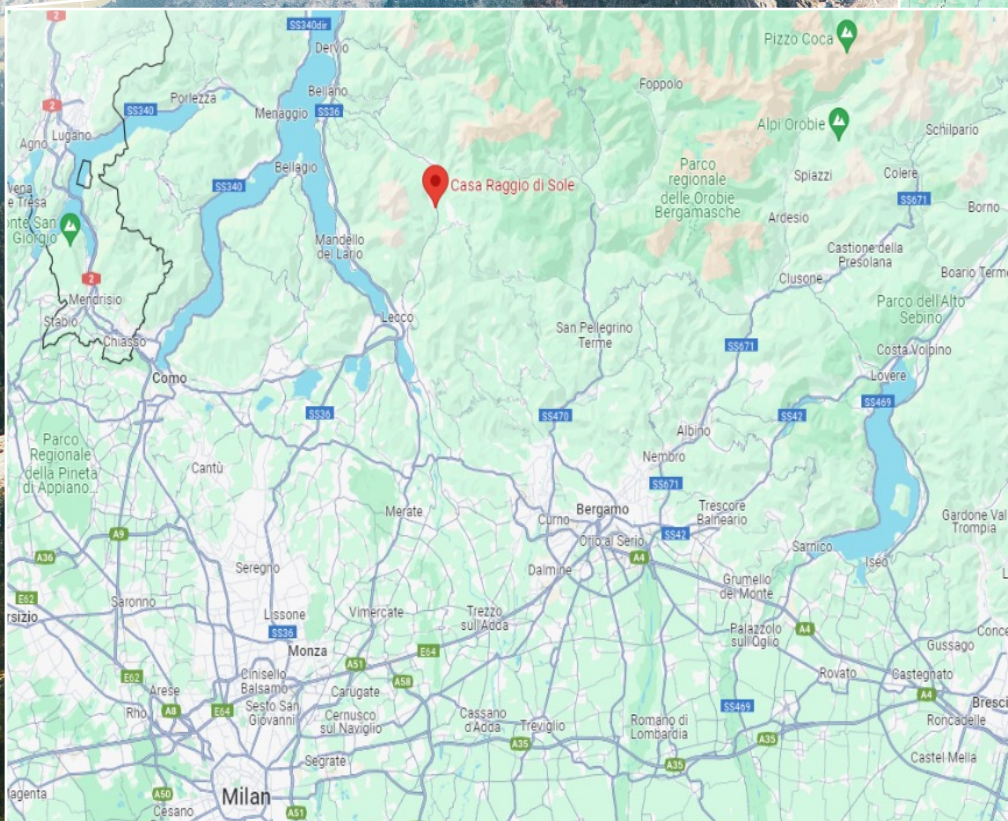
## The venue

Casa Raggio di Sole welcomes groups wishing to spend time in a quiet and beautiful environment. The venue has both single and double rooms, en-suite, is accessible, and offers a warm and comfortable environment. Pasturo, near Lake Como, is a quiet village surrounded by mountains that offer clean air and natural serene beauty.

## Travel

The location is close to the airports of Bergamo Orio al Serio (50 km), Milan Linate (70 km) and Milan Malpensa (90 km) and can be reached from these in 1-1.15 hours by car. The nearest train station is Lecco.

*Pets and babies are welcome, accompanied by people who can take care of them.*



# IL NODO GROUP

## Impresa Sociale

IL NODO Group is a non-profit scientific-cultural social enterprise born from a professional team established in Turin in the 90s who carried out study, training and consultancy in collaboration with the Tavistock Institute and other scientific national and international institutions. It is a multidisciplinary scientific center, with a membership base of professionals with interdisciplinary and transversal skills in health, social care and social welfare, business, schools, social cooperation and public administration. It is the main sponsor of several residential Group Relations Conferences.

# THE TAVISTOCK INSTITUTE OF HUMAN RELATIONS

The Tavistock Institute of Human Relations, is a not-for-profit social science organisation-for-learning, working with challenging issues for the public good: helping people and business / organisations to learn, change and innovate, especially in difficult times through CPD, consultancy, research & evaluation. Studying how humans relate to each other and systems, how we grow, and how we embrace learning and change - the Institute has been radically exploring these since 1947 in academic, artistic and questioning ways.

## Registration

[www.tiny.cc/ECW25](http://www.tiny.cc/ECW25)

## Information

[ecw@ilnodogroup.it](mailto:ecw@ilnodogroup.it)